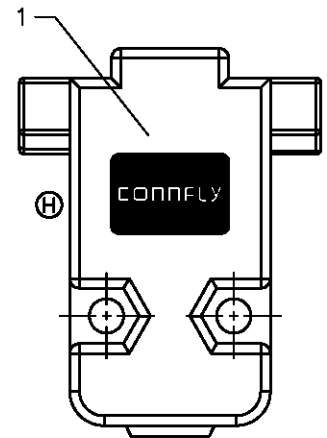
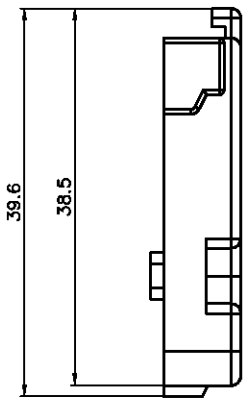
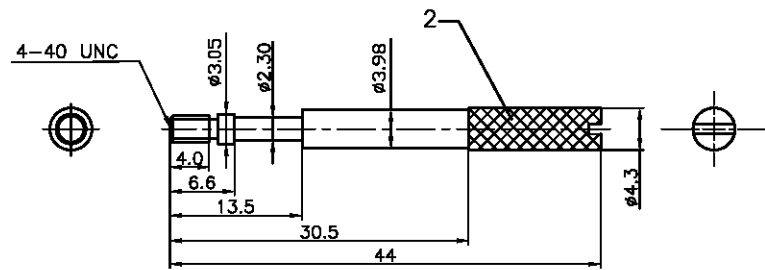
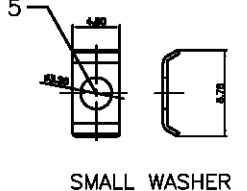
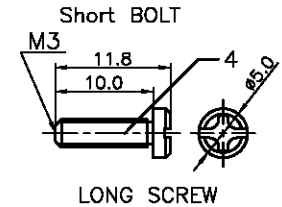
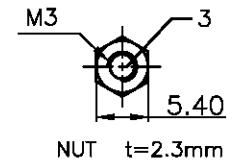
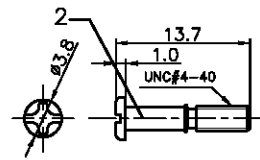
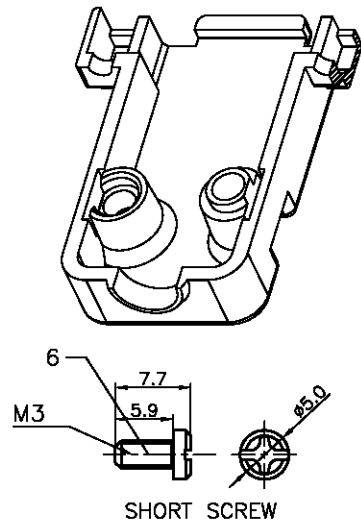


| BOM LIST | | | |
|----------|----------------|------|---------|
| ITEM | PART NAME | Q'ty | NOTES |
| 1 | PLASTIC HOOD | 2 | SEE P/N |
| 2 | 2.1 LONG BOLT | 2 | #4-40 |
| | 2.2 SHORT BOLT | 2 | #4-40 |
| 3 | NUT | 2 | M3 |
| 4 | LONG SCREW | 2 | M3 |
| 5 | SMALL WASHER | 2 | |
| 6 | SHORT SCREW | 2 | M3 |
| 7 | METAL WASHER | 2 | M3 |



| REV. | DESCRIPTION | DRAWN | CHECKED | APPROVED |
|------|-----------------|---------------|---------|---------------|
| A | NEW RELEASE | LJH 08/13/05' | ~ | LJC 08/13/05' |
| C | 整理美制短螺丝尺寸 | YCH 07/18/08' | ~ | LJC 07/18/08' |
| D | 增加"全包装"类型 | YCH 05/20/10' | ~ | LJC 05/20/10' |
| E | 改M3*12的螺钉为M3*10 | YCH 08/30/10' | ~ | LJC 08/30/10' |
| F | ADD P/N CODE | LJC 12/24/13' | ~ | LJC 12/24/13' |
| H | ADD LOGO | JLZ 12/17/14' | ~ | |


- NOTES:
- Hardwares are all Nickel plated.
 - PART NUMBER CODE:
DS1045 - 09 X X X X X - X
- Hood Materials (H)
 - A: ABS
 - B: Similar ABS
 - Washer type
 - 1: Metal
 - Bolt type
 - L: Long
 - S: Short
 - Packing type
 - 1: Mix packing
 - 2: Separation packing
 - Q: Full packing
 - Cover Material
 - P: Plastic(ABS)
 - Cover Color
 - A: Gray
 - B: Black
 - V: Ivory
 - Position
 - 09: 9pin



| GENERAL TOLERANCE | | ANGLE TOLERANCE | |
|-------------------|-------|-----------------|-----|
| X. | ±0.60 | X. | ±5° |
| .X | ±0.38 | .X | ±3° |
| .XX | ±0.25 | .XX | ±2° |

| PROJECTION | TITLE | D-SUB Plastic Hood 180° 9 Positions | |
|------------|-------|--|---------------|
| UNITS | mm | SHEET | DS1045 SERIES |
| SHEET SIZE | A4 | SERIES | DS1045 SERIES |

| DRAWING TYPE | COSTOMER | | |
|--------------|----------------------|-------|--------|
| SCALE | 1:1 | SHEET | 1 OF 1 |
| DRAWING NO. | C-DS1045-09XXXXX-X-H | | |


晨翔电子有限公司
CONNPLY® CONNPLY ELECTRONIC CO., LTD