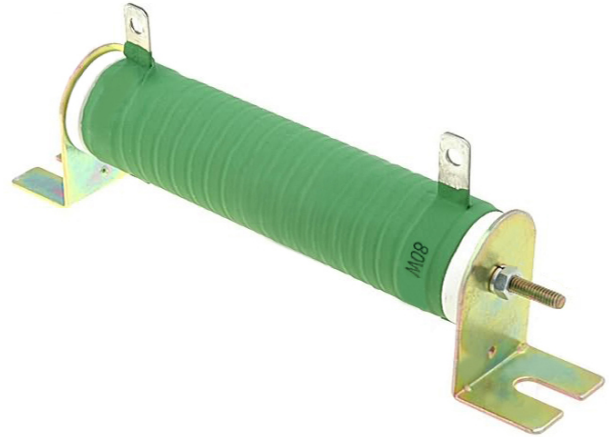


Wire resistors SR Passives

SR^{SR}**PASSIVES**

Resistor type	wire-wound
Tolerance	±5%
Temp. coeff.	200 ppm/°C
Number of mounting holes	2
Leads	solder lugs



Symbol	Resistance [Ω]	Power [W]	Body dim. [mm]	Mount. holes pitch [mm]
R80W-1R	1	80	Ø28 x 121	145
R80W-2R2	2.2	80	Ø28 x 121	145
R80W-4R7	4.7	80	Ø28 x 121	145
R80W-10R	10	80	Ø28 x 121	145
R80W-22R	22	80	Ø28 x 121	145
R80W-47R	47	80	Ø28 x 121	145
R80W-100R	100	80	Ø28 x 121	145
R80W-220R	220	80	Ø28 x 121	145
R80W-470R	470	80	Ø28 x 121	145
R80W-1K	1 k	80	Ø28 x 121	145
R80W-2K2	2.2 k	80	Ø28 x 121	145
R80W-4K7	4.7 k	80	Ø28 x 121	145
R80W-10K	10 k	80	Ø28 x 121	145