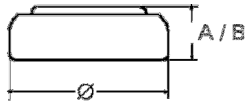


Engineering Data Sheet

Type Number 22379
Designation IEC ZR 63 / ZR 521

System Nickeloxyhydroxide / Zinc /
 KOH - Electrolyte



OC Voltage..... 1.73 V
Nominal Voltage 1,65 V
Typical Capacity C 8 mAh
 Load 68,1 kOhm, at 20°C down to 1.2 V

Weight (approx.) 0,23 g
Volume 0,06 ccm
Coding..... Date of Manufacturing
 Month/Year

Temperature Ranges min max.
 Storage -10 °C 65 °C
 Discharge -10 °C 65 °C

Dimensions (according IEC 60086-2) min max.
 Diameter (Ø)..... 5,7 5,8
 Height (A/B) 2,0 2,15

Segment Watch

Application Watch
 Electronic
 Medical

Typical Capacities (at 20 °C)

Discharge Type	Load	End Voltage:	1.2 V
Continuous 24h/d, 7d/w Current [µA]:	68100 Ω 24	Time [h]: Capacity [mAh]: Energy [mWh]:	350 8 13