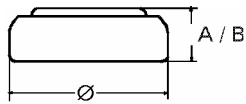


Data Sheet

Type Number 20393
Designation IEC SR 48
System Silver oxide / Zinc /
 KOH - Electrolyte



Nominal Voltage 1,55 V
Typical Capacity C 75 mAh
 Load 13 kOhm, at 20°C down to 1.2 V

Weight (approx.) 1,08 g
Volume 0,24 ccm
Coding..... Date of Manufacturing
 Month/Year

Temperature Ranges

	min	max.
Storage	-10°C	65°C
Discharge	-10°C	65°C

Dimensions

	min	max.
Diameter (Ø)	7,55	7,9
Height (A/B)	5,0	5,4

Segment Watch / High Drain

Main Applications Watch
 Photo
 Electronic

Typical Capacities (at 20°C)

Discharge Type	Load	End Voltage:	1.2 V
Continuous 24h/d,7d/w Current [µA]:	13000 Ω 120	Time:	615 h
		Capacity [mAh]:	75
		Energy [mWh]:	115