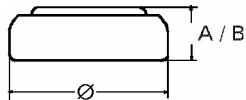


Data Sheet

Type Number 395
Designation IEC SR 57
System Silver oxide / Zinc /
 NaOH - Electrolyte



Nominal Voltage 1,55 V
Typical Capacity C 42 mAh
 Load 13 kOhm, at 20°C down to 1.3 V

Weight (approx.) 0,75 g
Volume 0,17 ccm
Coding..... Manufacturing Month/Year by
 Letter Code

Temperature Ranges

Storage	min	max.
Discharge	-10°C	65 °C
	-10°C	65°C

Dimensions

Diameter	min	max.
Height (A/B)	9,15	9,50
	2,4	2,7

Segment
 Watch / High Drain

Main Applications
 Watch
 Photo
 Electronic

Typical Capacities (at 20°C)

Discharge Type	Load	End Voltage:	1.3 V
Continuous	13000 Ω	Time:	350 h
24h/d,7d/w		Capacity [mAh]:	42
Current [μA]:	120	Energy [MWh]:	65