

LARGE ALUMINUM ELECTROLYTIC CAPACITORS

GL Screw Terminal Type, Long Life Series

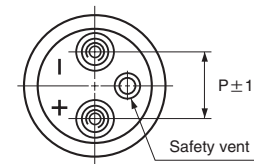
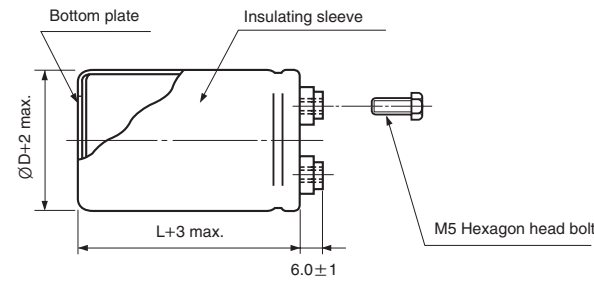
- Screw terminal series in compact case sizes
- High reliability, long life guaranteed for 20000 hours load life at 85°C
- Suited for use in industrial power supplies for inverters
- Complied to the RoHS directive



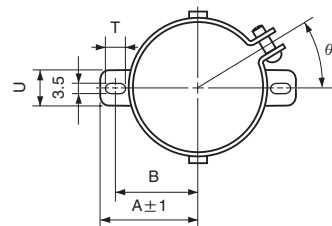
Item	Characteristics	
Operating temperature range	-25 ~ +85°C	
Capacitance tolerance	±20% at 120Hz, 20°C	
Leakage current max.	$I=3\sqrt{CV}$ (µA) (after 5 minutes)	
Dissipation factor max.	0.20 max. at 120Hz, 20°C	
Load life (after application of the rated voltage for 20000 hours at 85°C)	Leakage current	Less than specified value
	Capacitance change	Within ±20% of initial value
	tanδ	Less than 300% of specified value
Shelf life (at 85°C)	After 1000 hours no load test, leakage current, capacitance and tanδ are same as load life value.	

DRAWING

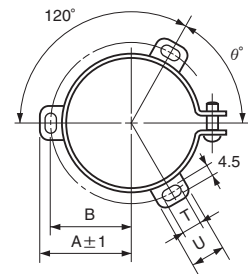
Unit : mm



TWO LEGS ANGLE



THREE LEGS ANGLE



TWO LEGS ANGLE SIZE TABLE

ØD	B	A	T	U	θ°	P
51	33.6	39.9	6	14	30	22
63.5	40.8	46.8	6	14	30	28.6

THREE LEGS ANGLE SIZE TABLE

ØD	B	A	T	U	θ°	P
51	32.9	38.9	7	12	60	22
63.5	38.4	45.3	7	14	60	28.6
76.2	44.5	51.5	8	16	60	31.8
89	50.8	61	8	16	60	31.8

LARGE ALUMINUM ELECTROLYTIC CAPACITORS



GL series

DIMENSIONS & MAXIMUM PERMISSIBLE RIPPLE CURRENT

WV µF	Item ØD×L (mm)	350		400		450			
		Ripple current (A rms)		Ripple current (A rms)		Ripple current (A rms)			
		40°C 120Hz	85°C 120Hz	40°C 120Hz	85°C 120Hz	40°C 120Hz	85°C 120Hz		
1500						51×110	13.4	6.1	
1800				51×110	14.6	6.6	51×130	15.7	7.1
2200	51×110	16.2	7.3	51×130	17.3	7.9	63.5×110	17.2	7.8
2700	51×130	19.2	8.7	63.5×110	19.0	8.7	63.5×130	20.3	9.2
3300	63.5×100	20.3	9.2	63.5×130	22.5	10.2	76.2×110	21.7	9.9
3900	63.5×110	22.9	10.4	76.2×100	22.7	10.3	76.2×130	25.1	11.4
4700	76.2×100	25.0	11.4	76.2×130	27.6	12.5	76.2×150	29.1	13.2
5600	76.2×110	28.2	12.8	76.2×150	31.8	14.5	76.2×160	32.7	14.8
6800	76.2×130	33.1	15.1	76.2×160	36.0	16.4	89×150	38.5	17.5
8200	76.2×150	39.5	18.0	89×150	42.3	19.2	89×160	43.4	19.7
10000	89×150	46.7	21.2	89×160	47.9	21.8			
12000	89×160	52.5	23.9						

PERMISSIBLE RIPPLE CURRENT MULTIPLIERS

Frequency	50Hz	120Hz	300Hz	1kHz	3kHz
Coefficient	0.8	1.0	1.1	1.3	1.4