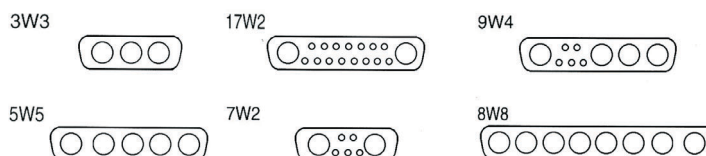
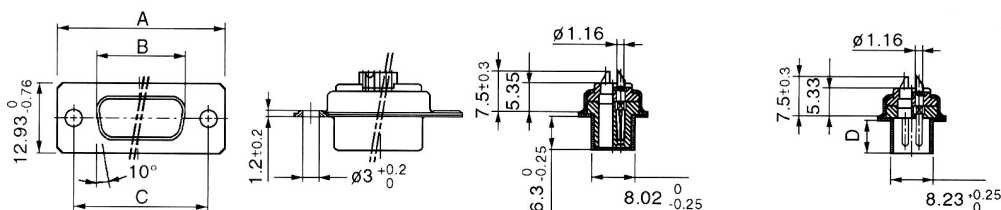
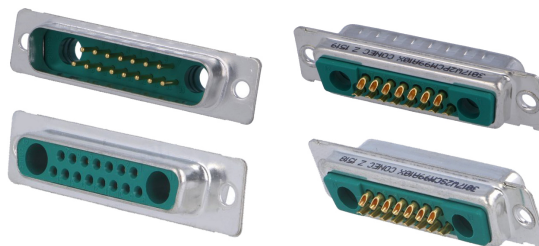


SUBD KONEKTORI UTSD
SUBD KOMBINOVANI KONEKTORI UTSDC

Tehnički podaci

Izolacioni materijal: poliamid
 Kućište: čelik – pocinkovan
 Kontakti: mesing, zlato na niklu
 Dopuštena struja po kontaktu: 5A max.
 Radni napon: 125 V_{eff}
 Ispitni napon: 1000V, 50Hz, 1min.
 Prolazni otpor: $\leq 3 \times 10^{-3} \Omega$
 Radna temperatura: -55... +125°C



	Tip	Pol	Dimenzije u mm				
			A	B	C	D	
Muški	M15-3W3	15	3W3	39,52	25,12	33,30	6,12
	M15-7W2	15	7W2	39,52	25,12	33,30	6,12
	M25-5W5	25	5W5	53,42	38,84	47,04	5,99
	M25-9W4	25	9W4	53,42	38,84	47,04	5,99
	M25-17W2	25	17W2	53,42	38,84	47,04	5,99
	M37-8W8	37	8W8	69,70	55,30	63,50	5,99
Zenski	Z15-3W3	15	3W3	39,52	24,79	33,30	16,0
	Z15-7W2	15	7W2	39,52	24,79	33,30	16,0
	Z25-5W5	25	5W5	53,42	38,84	47,04	16,0
	Z25-9W4	25	9W4	53,42	38,84	47,04	16,0
	Z25-17W2	25	17W2	53,42	38,84	47,04	16,0
	Z37-8W8	37	8W8	69,70	55,30	63,50	16,0