

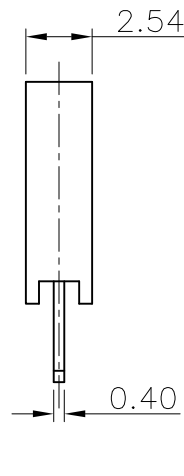
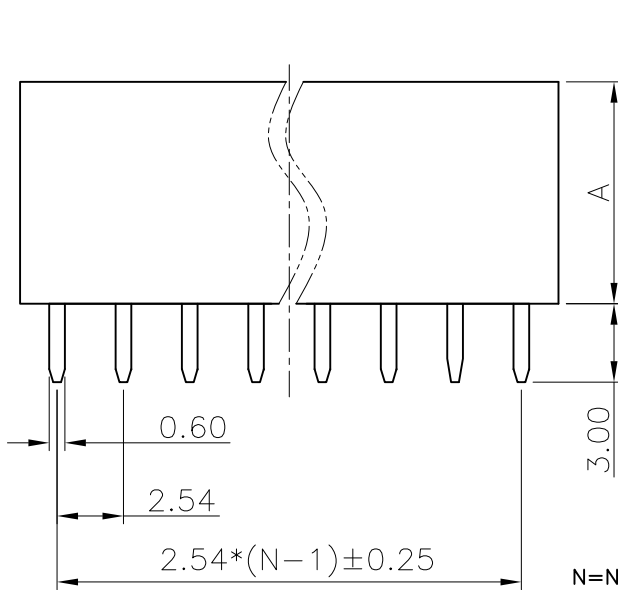
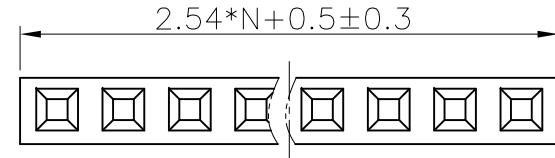
REV.	DESCRIPTION	DRAWN	CHECKED	APPROVED
A	NEW RELEASE	YCH 10/22/09'	~	LJC 10/22/09'
B	Drawing correction	JLZ 02/10/15'	~	

NOTES:

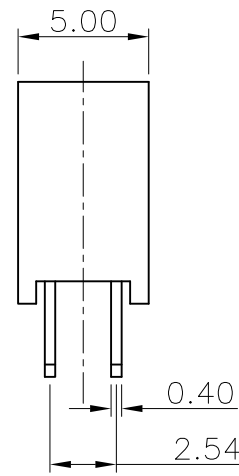
- ELECTRICAL CHARACTERISTICS:
 - CONTACT RESISTANCE: 20mΩ Max. INITIAL.
 - DIELECTRIC WITHSTANDING VOLTAGE: 500V AC(rms) FOR 1 MINUTE.
 - INSULATION RESISTANCE: 1000MΩ Min.
- MECHANICAL CHARACTERISTICS:
 - CONTACT RETENTION FORCE: 500gf Min.
- ENVIRONMENT CHARACTERISTICS:
 - TEMPERATURE RANGE: -40°C ~ +105°C.
- PRODUCT NUMBER CODE:

DS1023- X X X X

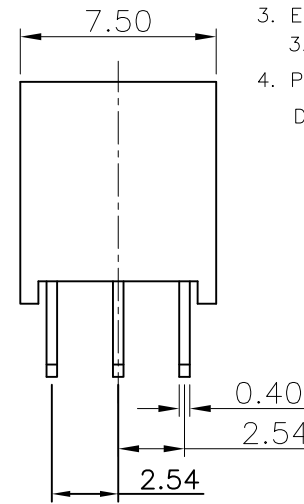
- PROFILE HEIGHT(DIM A)
 - 1: 8.5mm
 - 2: 5.0mm
- CONTACT PLATING
 - F1: FULL GOLD FLASH
 - 2: NICKEL + GOLD FLASH
- MOUNTING TYPE
 - S: Straight TYPE
- No. OF CONTACTS
 - 1*1-1*40
 - 2*2-2*40
 - 3*3-3*40



SINGLE ROW
N=No. OF CONTACTS



DUAL ROWS
N=No. OF CONTACTS/2



DUAL ROWS
N=No. OF CONTACTS/3

GENERAL TOLERANCE		ANGLE TOLERANCE		PROJECTION		TITLE	FEMALT HEADER PITCH
X.	±0.60	X.	±5°	UNITS	mm	2.54mm V/T SINGLE/DUAL ROWS TYPE	
.X	±0.38	.X	±3°	SHEET SIZE	A4	SERIES	DS1023 SERIES
.XX	±0.25	.XX	±2°	晨翔电子有限公司 CONNFLY® CONNFLY ELECTRONIC CO., LTD			
DRAWING TYPE		CUSTOMER					
SCALE	1:1	SHEET	1 OF 1				
DRAWING NO.		C-DS1023-XXX1-B					