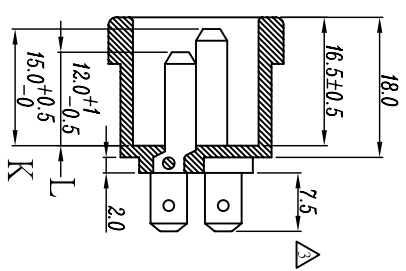
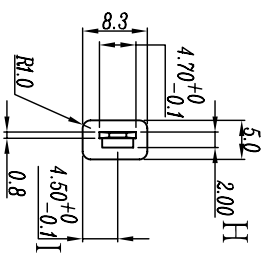
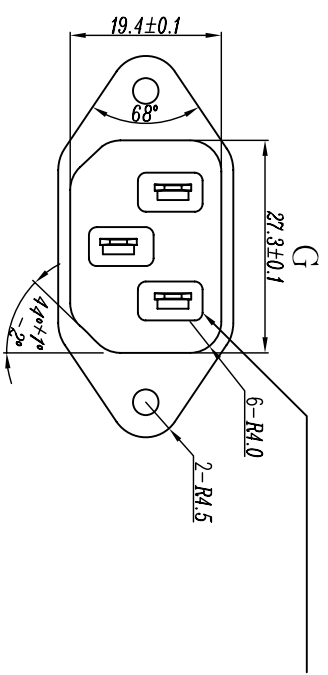
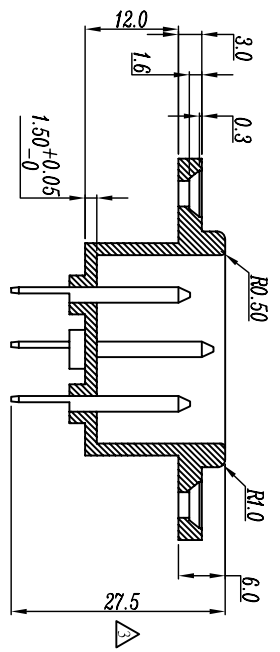


SECTION: B-B'



SECTION: A-A'



NOTE:
MATERIAL: NAN YA 1403G3,PBT WITH 15%GF,UL 94V-0

SPECIFICATION MODEL: KS-102
 ▲ RATING: 15A 250VAC (UL/CUL)
 ▲ 10A 250VAC (VDE/CCC/SEMKO/
 DEMKO/FIMKO/NEMKO)
 INSULATION RESISTANCE: 100M Ω, DC 500V
 DIELECTRIC STRENGTH: 2000VAC FOR 1 MINUTE
 MEET UL 498 & IEC/EN60320 REQUIREMENTS

REVISION	DESCRIPTION	REVISED BY	TOLERANCES	ANGLE	UNIT	PART NAME	DWG NO
△2005.09.27	端子改變后修改尺寸,增加安規.	孫斌	.X±0.1	±	mm	KS-102 規格圖	S0299C
△2005.01.03	修改RATING內容.	余龍	.XX±0.05		1:1		
△2004.04.21	更換圖框,首次出圖	梁春林			2004/05/21	B-278	