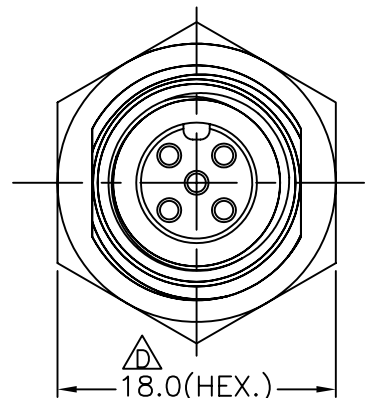
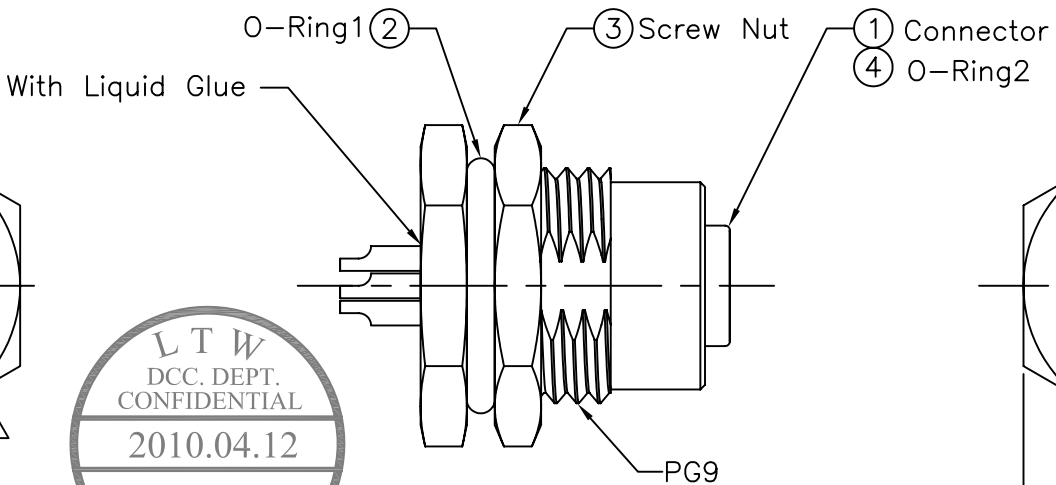
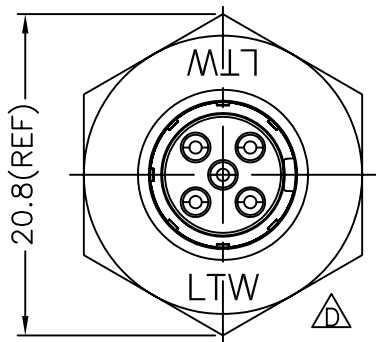
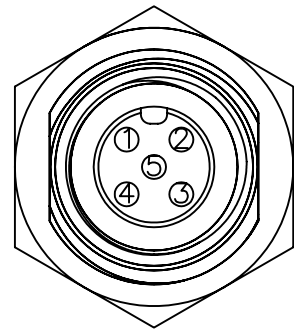
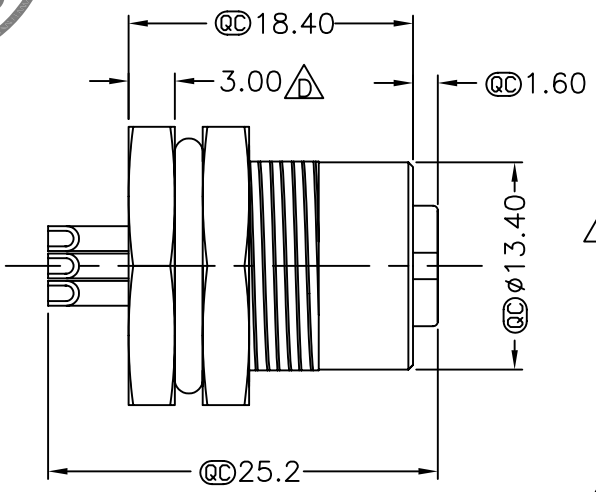


LTW
CONFIDENTIAL
2010.03.30
R&D DEPT.

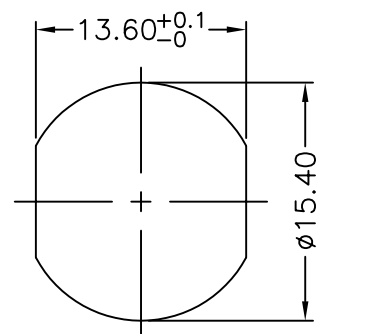
REV.	ECN NO.	DATE	SIGN	DESCRIPTION
B	LEN-750017	2007/05/01	Cloud	Change the Panel Thickness.
C	LEN-7A0012	2007/10/01	Zeus	Added Note
D	LEN-040046	2010/03/30	Vicky	REF. TO ECR/N.NOTE.



LTW
DCC. DEPT.
CONFIDENTIAL
2010.04.12
ISSUED



Pin Assignment
Front View



Recommended Panel Cut-Out

- Note:
- * @C Important Dimension.
 - △* Waterproof Rate: IP68.
IP68: 1M Depth Of Water In 24hours.
 - * Housing: Nylon+GF, Black.
 - * Female Pin: Copper Alloy, Gold Plated.
 - * Shield: Zinc Alloy, Nickel Plated.
 - * Nut: Zinc Alloy, Nickel Plated.
 - * O-Ring1: EPDM, Black.
 - △* O-Ring2: Viton, Green.
 - △* For Panel Thickness Max 4.5mm.
 - △* Nut Torque: 4-6 Kgf.cm

UNIT:mm	
TOLERANCE	
.X	±0.25
.XX	±0.1
.XXX	±0.05
ANGLES	±1°

TITLE		M12 Conn	
Panel Screw 5Pin F Conn F Pin			
SCALE	Free	SHEET	1 OF 1
REV.	D	SIZE	A4
@C : Inspection Item			

LTW
亮泰企業股份有限公司

ITEM NO	LTW12-05PFFS-SF8001
DWG NO	LTW12-05PFFS-SF8001
CUSTOMER	

DRAWN BY	Vicky
CHECKED BY	Simon
APPROVED BY	Lion

DATE	2010/03/30
DATE	2010/03/30
DATE	2010/03/30

THIS DOCUMENT IS SUBJECT TO CHANGE WITHOUT NOTICE. IT IS CONFIDENTIAL AND A PROPERTY OF LTW. DISCLOSURE TO THIRD PARTY HAS TO BE AUTHORIZED BY LTW.