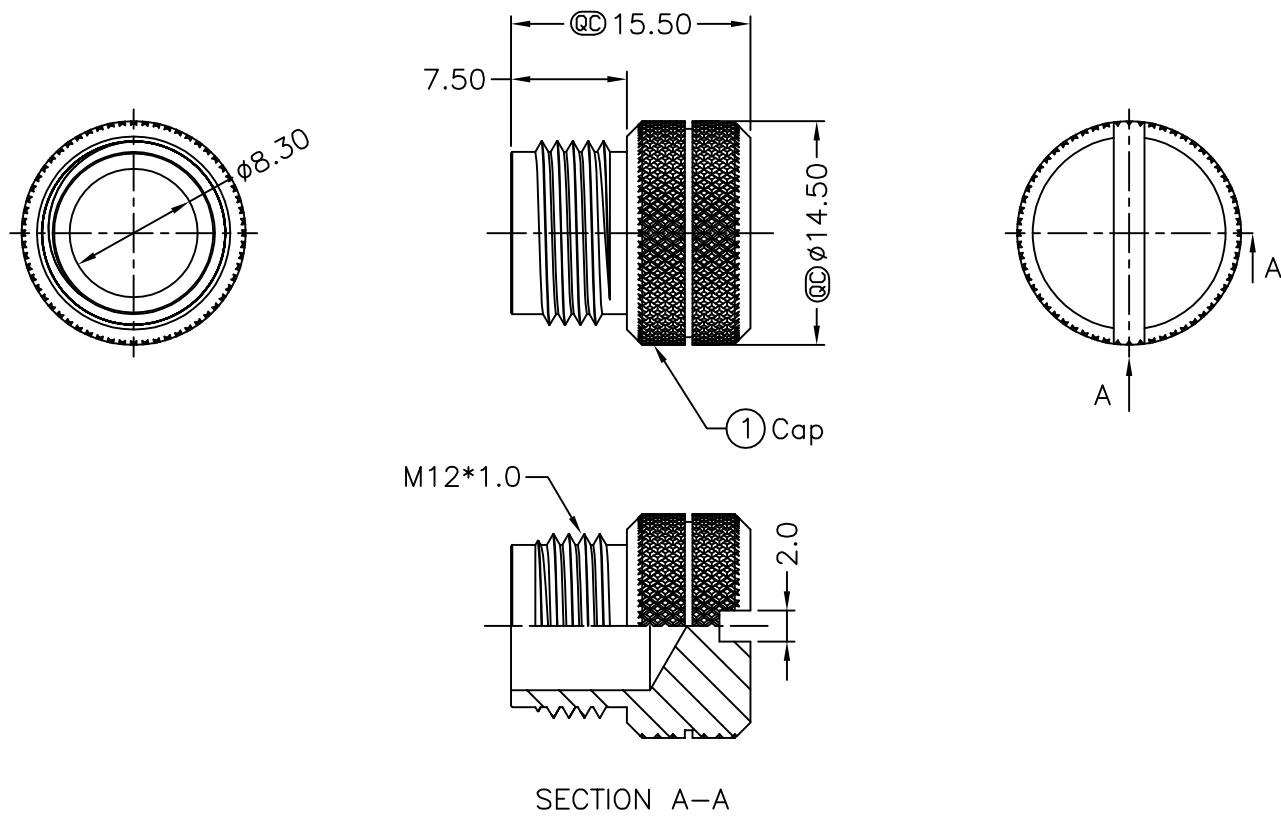


REV.	ECN NO.	DATE	SIGN	DESCRIPTION
A	Initial Release	2013/09/12	Vicky	Old Item No. CAP-WBDMFSA2
B	LEN1490128	2014/09/03	Vicky	Update Note & Title



Note:
 * @C Important Dimension
 * Waterproof Rate: IP67
 △* Cap: Copper Alloy, Nickel Plated

UNIT:mm	
TOLERANCE	
.X	±0.25
.XX	±0.1
.XXX	±0.05
ANGLES	±1'

TITLE Waterproof Cap M12*1.0P	
△ For Female Conn Screw Type	
SCALE Free	SHEET 1 OF 1
REV. B	SIZE A4
@C :Inspection Item	

Amphenol LTW
 安費諾亮泰企業股份有限公司

ITEM NO CAP-WBDF SMA2	DRAWN BY Vicky	DATE 2014/09/03
DWG NO CAP-WBDF SMA2	CHECKED BY Sam	DATE 2014/09/03
CUSTOMER ALTW	APPROVED BY Rita	DATE 2014/09/03

THIS DOCUMENT IS SUBJECT TO CHANGE WITHOUT NOTICE. IT IS CONFIDENTIAL AND A PROPERTY OF Amphenol LTW. DISCLOSURE TO THIRD PARTY HAS TO BE AUTHORIZED BY Amphenol LTW.

1 2 3 4 5 6 7 8

F
E
D
C
B
A

1 2 3 4 5 6 7 8 FMW10702-01-01A2