



单刀波动开关
单刀带灯波动开关

Single-pole Rocker Switch
Single-pole Illuminated Rocker Switch

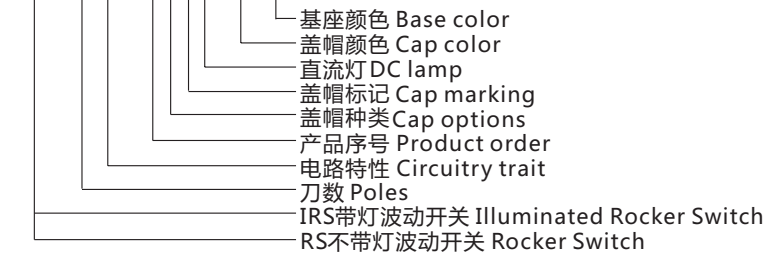
RS-1 Series
IRS-1 Series



RoHS

型号说明 Ordering Information

IRS-101-1A3D-R/B



技术特性 Specification

- 1.规格 Rating:20A 125VAC;15A 250VAC;35A 12VDC
- 2.接触电阻 Contact Resistance:35mΩ max
- 3.绝缘电阻 Insulation Resistance:500VDC 100MΩ min
- 4.耐电压 Dielectric Strength:1500VAC, 1Minute
- 5.操作温度 Operating Temperature:-25°C ~ +85°C
- 6.电气寿命 Electrical Life:10,000 Cycles

电路特性Circuitry trait

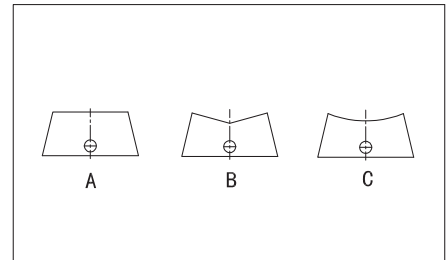
01	ON	-	OFF
02	ON	-	ON
11	(ON)	-	OFF
03	ON	OFF	ON
13	ON	OFF	(ON)
23	(ON)	OFF	(ON)

() :回弹指示 Indicates Momentary

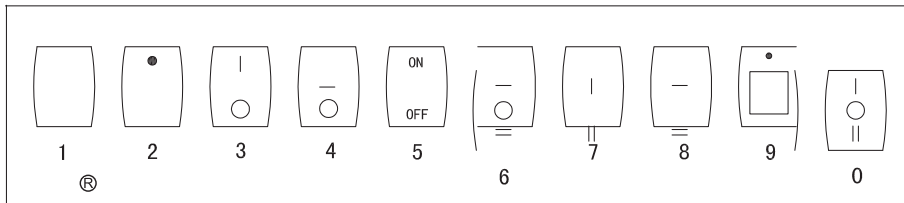
盖帽颜色Cap color 基座颜色Base color 盖帽种类Cap options

黑 Black (B)	白 White (W)
红 Red (R)	黄 Yellow (Y)
绿 Green (G)	蓝 Blue (BL)
桔黄 Orange (O)	灰 Gray (GR)

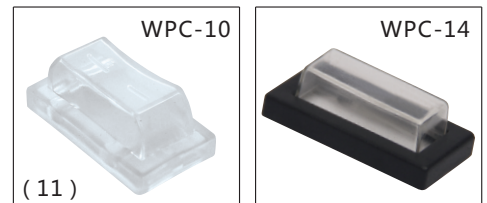
黑 Black (B)
白 White (W)
灰 Gray (GR)



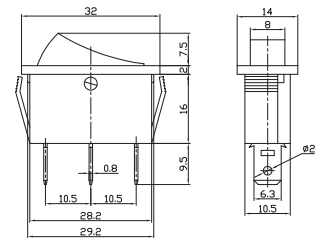
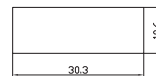
盖帽标记 Cap marking



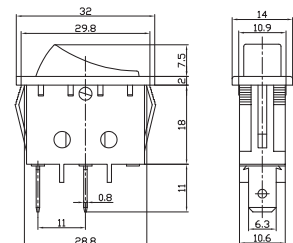
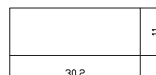
防水罩 Water proof cap



IRS-101-3C ON-OFF
SPST 3P
RS-102-3C ON-ON
RS-103-3C ON-OFF-ON
SPDT 3P



RS-101-11C ON-OFF
SPST 2P



IRS-101-11C ON-OFF
SPST 3P
RS-102-11C ON-ON
RS-103-11C ON-OFF-ON
RS-123-11C (ON)-OFF-(ON)
SPDT 3P

