



小型波动开关

Miniature Rocker Switch

小型带灯波动开关

Miniature Illuminated Rocker Switch

MRS Series

MIRS Series



RoHS

型号说明 Ordering Information

MRS-102A-2C7-R/B



技术特性 Specification

- 规格 Rating: ()6A 125VAC;3A 250VAC
(A)10A 125VAC;6A 250VAC
- 接触电阻 Contact Resistance:35mΩ max
- 绝缘电阻 Insulation Resistance:500VDC 100MΩ min
- 耐电压 Dielectric Strength:1500VAC, 1Minute
- 操作温度 Operating Temperature:-25°C ~ +85°C
- 电气寿命 Electrical Life:10,000 Cycles

电路特性 Circuitry trait

01	ON	-	OFF
02	ON	-	ON
11	(ON)		OFF
12	ON	-	(ON)
03	ON	OFF	ON
13	ON	OFF	(ON)
23	(ON)	OFF	(ON)

() :回弹指示 Indicates Momentary

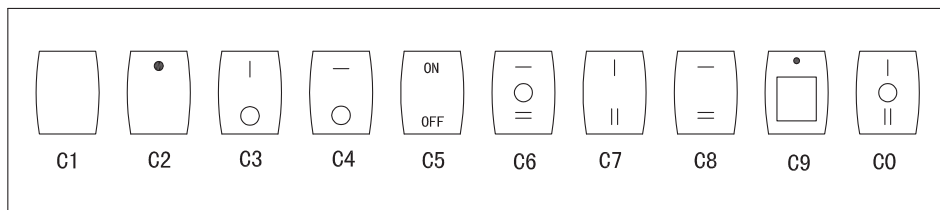
盖帽颜色 Cap color

黑 Black	(B)
白 White	(W)
红 Red	(R)
黄 Yellow	(Y)
绿 Green	(G)
蓝 Blue	(BL)
桔黄 Orange	(O)
灰 Gray	(GR)

基座颜色 Base color

黑 Black	(B)
白 White	(W)
灰 Gray	(GR)

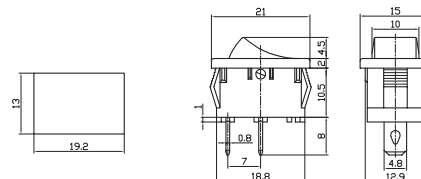
盖帽标记 Cap marking



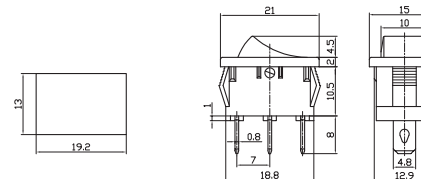
防水罩 Water proof cap



MRS-101A ON-OFF
SPST 2P

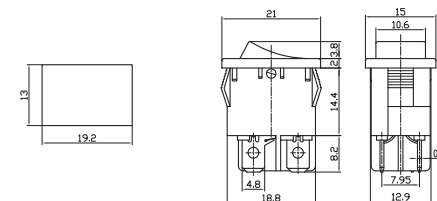


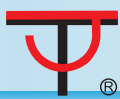
MRS-102A ON-ON
MRS-103A ON-OFF-ON
SPDT 3P



MRS-2-101A-2 ON-OFF
SPST 2P

MIRS-101A ON-OFF SPST
3P





小型波动开关

Miniature Rocker Switch

MRS Series

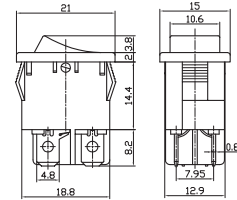
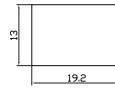
小型带灯波动开关

Miniature Illuminated Rocker Switch

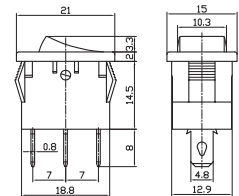
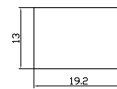
MIRS Series



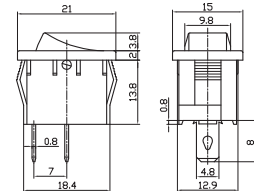
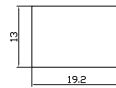
MRS-201A-2 ON-OFF
DPST 4P



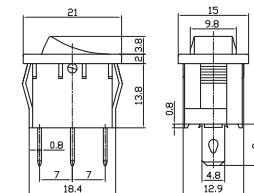
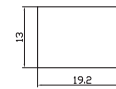
MIRS-101-2 ON-OFF
10A 125VAC; 6A 250VAC
SPST 3P



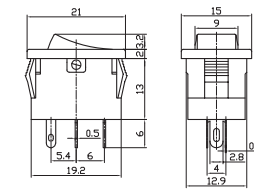
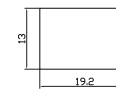
MRS-101A-2 ON-OFF
SPST 2P



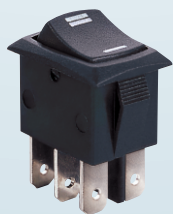
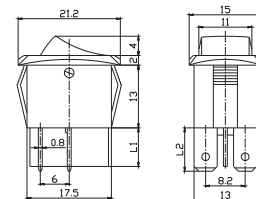
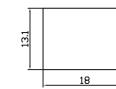
MRS-102A-2 ON-ON
MRS-103A-2 ON-OFF-ON
SPDT 3P



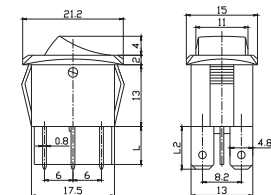
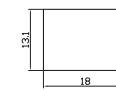
MIRS-101-3+LED ON-OFF
6A 125VAC; 3A 250VAC
SPST 4P



MRS-201-3 ON-OFF
DPST 4P
L1=3; 8
L2=5.5; 9



MRS-202-3 ON-ON
MRS-203-3 ON-OFF-ON
DPDT 6P
L1=3; 8
L2=5.5; 9





小型波动开关
小型带灯波动开关

Miniature Rocker Switch
Miniature Illuminated Rocker Switch

MRS Series
MIRS Series



	<p>MRS-101A-4 ON-OFF 10A 125VAC; 6A 250VAC SPST 2P</p>	
	<p>MRS-102A-4 ON-ON MRS-103A-4 ON-OFF-ON 10A 125VAC; 6A 250VAC SPDT 3P</p>	
	<p>MRS-101-5 ON-OFF 10A 125VAC; 6A 250VAC SPST 2P</p>	
	<p>MRS-101-10 ON-OFF 10A 125VAC; 6A 250VAC SPST 2P</p>	
	<p>MIRS-101-10 ON-OFF 10A 125VAC; 6A 250VAC SPST 3P</p>	
	<p>MRS-101-8 ON-OFF 13A 125VAC; 6.5A 250VAC SPST 2P</p>	
	<p>MIRS-101-8 ON-OFF SPST 3P MRS-102-8 ON-ON MRS-103-8 ON-OFF-ON 13A 125VAC; 6.5A 250VAC SPDT 3P</p>	



小型波动开关

小型带灯波动开关

Miniature Rocker Switch

Miniature Illuminated Rocker Switch

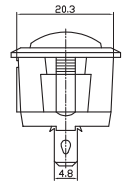
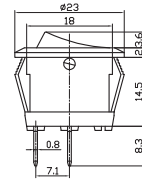
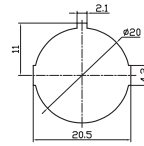
MRS Series
MIRS Series



MRS-101-9 ON-OFF

10A 125VAC;6A 250VAC

SPST 2P



MIRS-101-9 ON-OFF

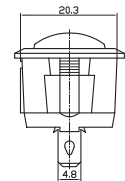
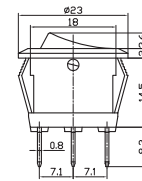
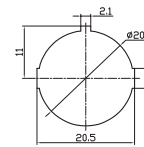
SPST 3P

MRS-102-9 ON-ON

MRS-103-9 ON-OFF-ON

10A 125VAC;6A 250VAC

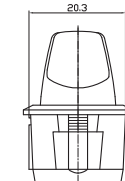
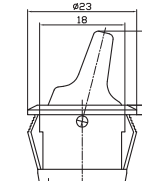
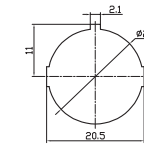
SPDT 3P



MRS-101-9H ON-OFF

10A 125VAC;6A 250VAC

SPST 2P



MIRS-101-9H ON-OFF

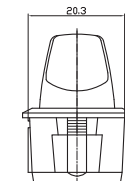
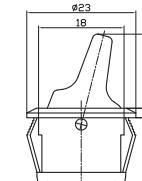
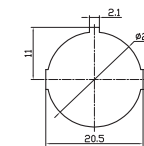
SPST 3P

MRS-102-9H ON-ON

MRS-103-9H ON-OFF-ON

10A 125VAC;6A 250VAC

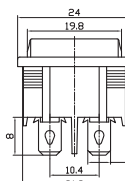
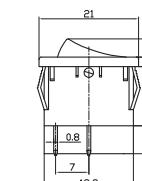
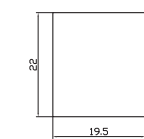
SPDT 3P



MRS-201 ON-OFF

MRS-201A ON-OFF

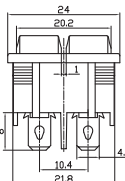
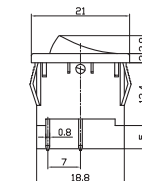
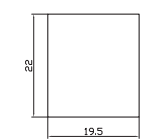
DPST 4P



MRS-2101 ON-OFF

MRS-2101A ON-OFF

DPST 4P



MIRS-201-4 ON-OFF

MRS-201-4 ON-OFF 10A

125VAC;6A 250VAC DPST 4P

