



中型钮子开关 Medium Toggle Switch

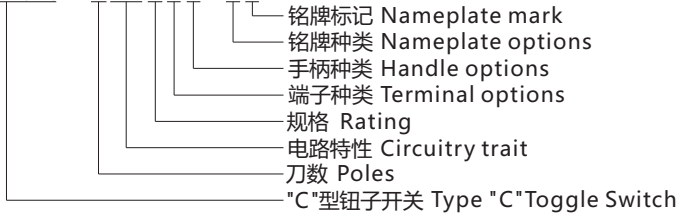
KN3

Series



型号说明 Ordering Information

KN3 (C) - 102APE-B2



- 铭牌标记 Nameplate mark
- 铭牌种类 Nameplate options
- 手柄种类 Handle options
- 端子种类 Terminal options
- 规格 Rating
- 电路特性 Circuitry trait
- 刀数 Poles
- "C"型钮子开关 Type "C" Toggle Switch

技术特性 Specification

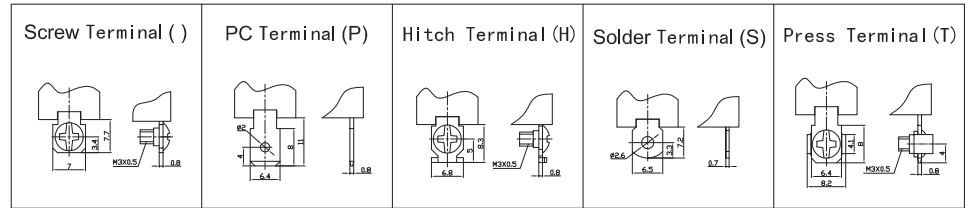
- 1.规格 Rating:()10A 125VAC;6A 250VAC
(A)15A 125VAC;10A 250VAC
(AA)20A 125VAC;15A 250VAC
- 2.接触电阻 Contact Resistance:50mΩ max
- 3.绝缘电阻 Insulation Resistance:500VDC 1000MΩ min
- 4.耐电压 Dielectric Strength:1500VAC, 1Minute
- 5.操作温度 Operating Temperature:-25°C ~ +85°C
- 6.电气寿命 Electrical Life:10,000 Cycles

电路特性 Circuitry trait

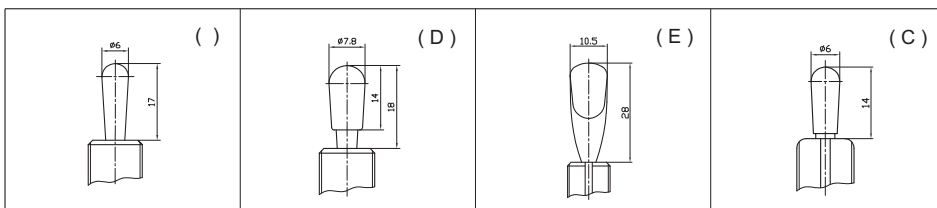
01	ON	-	OFF
02	ON	-	ON
12	ON	-	(ON)
03	ON	OFF	ON
13	ON	OFF	(ON)
23	(ON)	OFF	(ON)

() : 回弹指示 Indicates Momentary

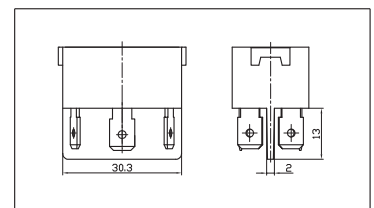
端子种类 Terminal options



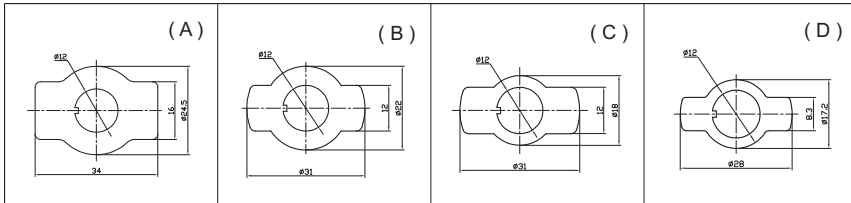
手柄种类 Handle options



特殊基座 Special base



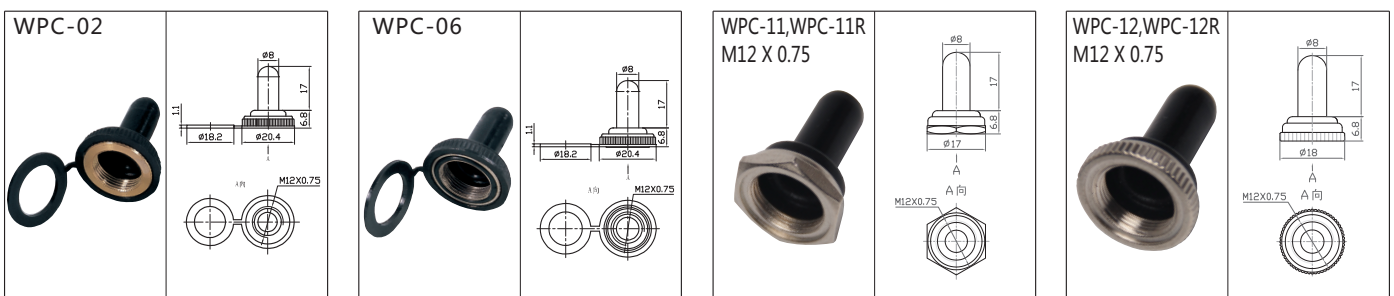
铭牌种类 Nameplate options



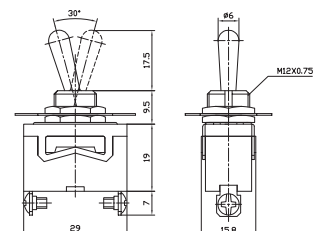
铭牌标记 Nameplate mark 基座颜色 Base color

1	ON - OFF	材料 Material	基座颜色 Base color
2	ON - ON	电木 Bakelite	黑 Black 棕 Brown
3	ON-OFF-ON	聚碳酸酯 PC	红 Red
		三聚氰胺 Melamine	蓝 Blue

防水帽 Water proof cap



KN3(C)-101 ON-OFF
KN3(C)-101A ON-OFF
SPST 2P



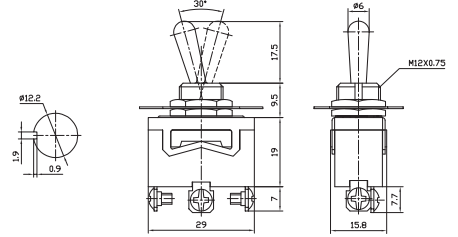


中型钮子开关 Medium Toggle Switch

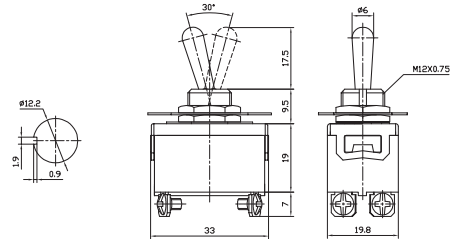
KN3 Series



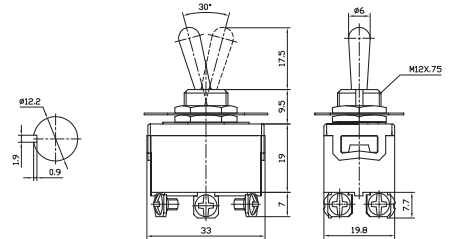
KN3(C)-102 KN3(C)-102A ON-ON
 KN3(C)-112 KN3(C)-112A ON-(ON)
 KN3(C)-103 KN3(C)-103A ON-OFF-ON
 KN3(C)-113 KN3(C)-113A ON-OFF-(ON)
 KN3(C)-123 KN3(C)-123A (ON)-OFF-(ON)
 SPDT 3P



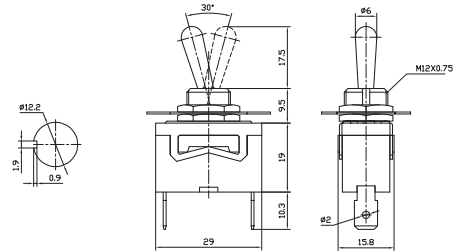
KN3(C)-201 ON-OFF
 KN3(C)-201A ON-OFF
 DPST 4P



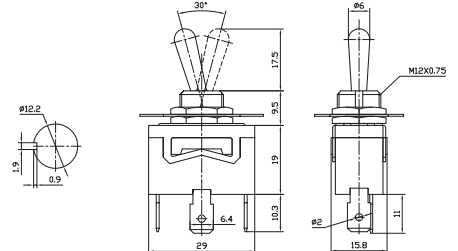
KN3(C)-202 KN3(C)-202A ON-ON
 KN3(C)-212 KN3(C)-212A ON-(ON)
 KN3(C)-203 KN3(C)-203A ON-OFF-ON
 KN3(C)-213 KN3(C)-213A ON-OFF-(ON)
 KN3(C)-223 KN3(C)-223A (ON)-OFF-(ON)
 DPDT 6P



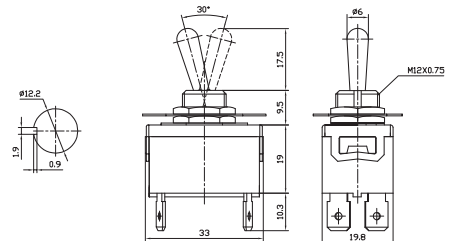
KN3(C)-101P ON-OFF
 KN3(C)-101AP ON-OFF
 SPST 2P



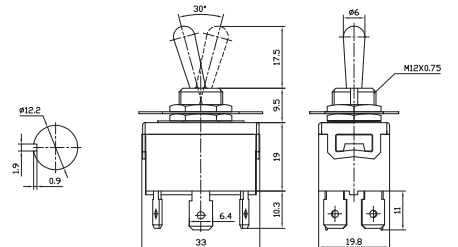
KN3(C)-102P KN3(C)-102AP ON-ON
 KN3(C)-112P KN3(C)-112AP ON-(ON)
 KN3(C)-103P KN3(C)-103AP ON-OFF-ON
 KN3(C)-113P KN3(C)-113AP ON-OFF-(ON)
 KN3(C)-123P KN3(C)-123AP (ON)-OFF-(ON)
 SPDT 3P



KN3(C)-201P ON-OFF
 KN3(C)-201AP ON-OFF
 DPST 4P





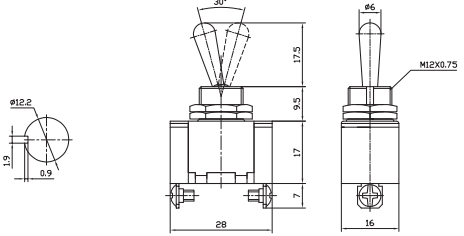


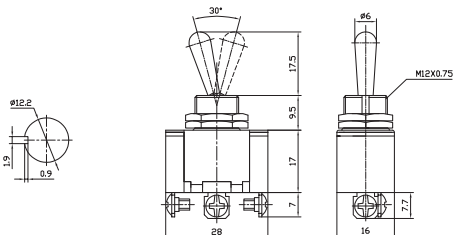


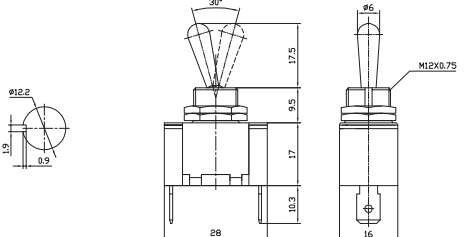


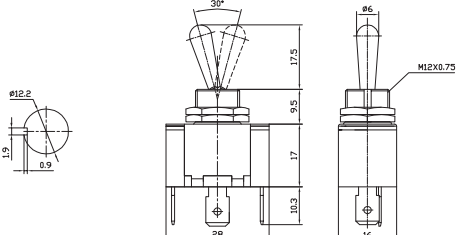

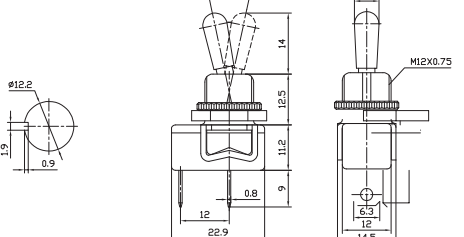
KN3(C)-202P KN3(C)-202AP ON-ON
 KN3(C)-212P KN3(C)-212AP ON-(ON)
 KN3(C)-203P KN3(C)-203AP ON-OFF-ON
 KN3(C)-213P KN3(C)-213AP ON-OFF-(ON)
 KN3(C)-223P KN3(C)-223AP (ON)-OFF-(ON)
 DPDT 6P





中型钮子开关 Medium Toggle Switch

KN3 Series

 	<p>KN3(A)-101 ON-OFF KN3(A)-101A ON-OFF</p> <p>SPST 2P UL Rating: 20A 125VAC; 10A 250VAC; 3/4HP 125/250VAC</p>	
 	<p>KN3(A)-102 KN3(A)-102A ON-ON KN3(A)-112 KN3(A)-112A ON-(ON) KN3(A)-103 KN3(A)-103A ON-OFF-ON KN3(A)-113 KN3(A)-113A ON-OFF-(ON) KN3(A)-123 KN3(A)-123A (ON)-OFF-(ON)</p> <p>SPDT 3P UL Rating: 20A 125VAC; 10A 250VAC; 3/4HP 125/250VAC</p>	
 	<p>KN3(A)-101P ON-OFF KN3(A)-101AP ON-OFF</p> <p>SPST 2P UL Rating: 20A 125VAC; 10A 250VAC; 3/4HP 125/250VAC</p>	
 	<p>KN3(A)-102P KN3(A)-102AP ON-ON KN3(A)-112P KN3(A)-112AP ON-(ON) KN3(A)-103P KN3(A)-103AP ON-OFF-ON KN3(A)-113P KN3(A)-113AP ON-OFF-(ON) KN3(A)-123P KN3(A)-123AP (ON)-OFF-(ON)</p> <p>SPDT 3P UL Rating: 20A 125VAC; 10A 250VAC; 3/4HP 125/250VAC</p>	
	<p>KN3(E)-101P ON-OFF</p> <p>6A 125VAC; 3A 250VAC</p> <p>SPST 2P (PLASTIC CAP)</p>	

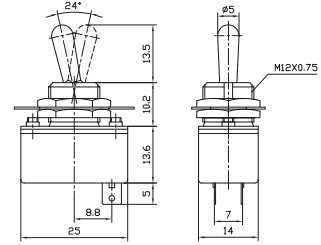


中型钮子开关 Medium Toggle Switch

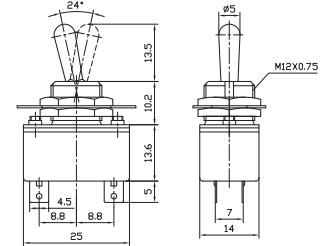
KN3 Series



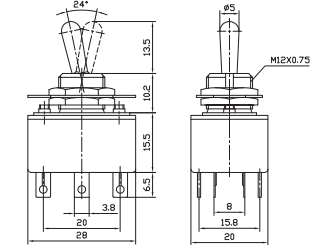
KN3-1 ON-OFF
4A 125VAC; 2A 250VAC
SPST 2P



KN3-2 ON-OFF
4A 125VAC; 2A 250VAC
SPDT 4P



KN3-3 ON-ON
5A 125VAC; 3A 250VAC
DPDT 6P



KNH-1 ON-OFF
6A 125VAC; 3A 250VAC; 10A 12VDC
SPST 2P

