



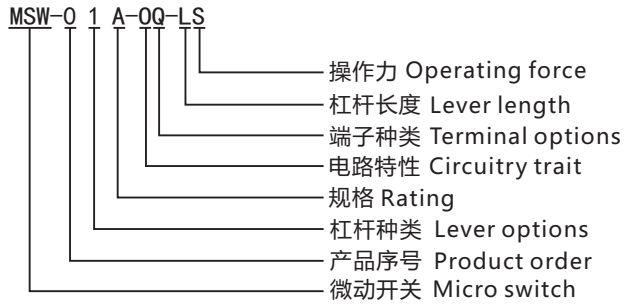
# 微动开关

# Micro Switch

# MSW Series



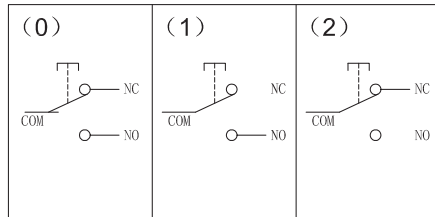
## 型号说明 Ordering Information



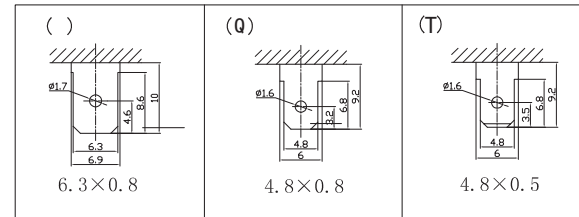
## 技术特性 Specification

- 规格 Rating: ( ) 10A 125/250VAC  
(A) 16A 125/250VAC  
(B) 5A 125/250VAC
- 接触电阻 Contact Resistance: 20mΩ max
- 绝缘电阻 Insulation Resistance: 500VDC 100MΩ min
- 耐电压 Dielectric Strength: 1500VAC, 1Minute
- 环境温度 Ambient Temperature: -25°C ~ +85°C
- 电气寿命 Electrical Life: 100,000 Cycles

## 电路特性 Circuitry trait



## 端子种类 Terminal options

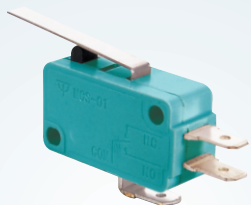
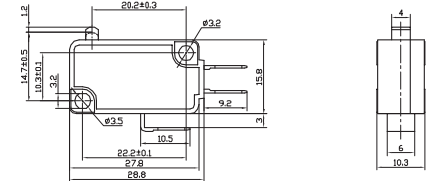
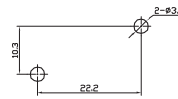


## 操作力 Operating force

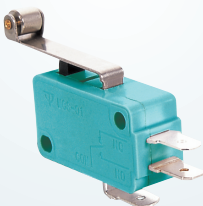
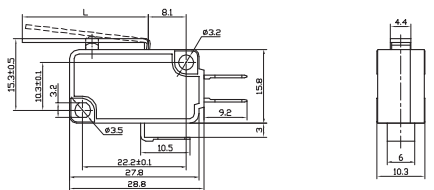
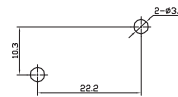
L : 35g±15g  
S: 160g±40g  
H: 320g±80g



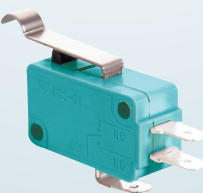
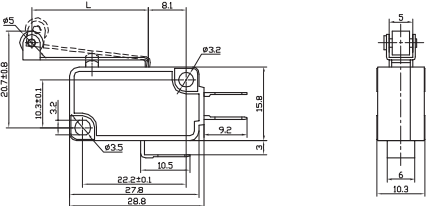
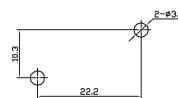
**MSW-01** ON-(ON)  
10A 125/250VAC  
**MSW-01A** ON-(ON)  
16A 125/250VAC  
SPDT 3P



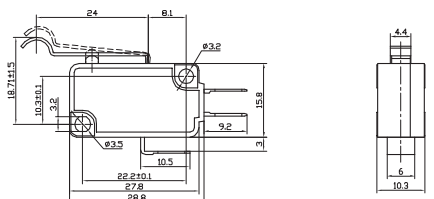
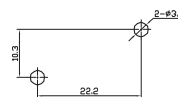
**MSW-02** ON-(ON)  
10A 125/250VAC  
**MSW-02A** ON-(ON)  
16A 125/250VAC  
SPDT 3P  
L=13; 27; 38; 53



**MSW-03** ON-(ON)  
10A 125/250VAC  
**MSW-03A** ON-(ON)  
16A 125/250VAC  
SPDT 3P  
L=12; 25



**MSW-04** ON-(ON)  
10A 125/250VAC  
**MSW-04A** ON-(ON)  
16A 125/250VAC  
SPDT 3P





MSW-1 Series 技术特性 Specification

1.规格 Rating:( ) 5A 125/250VAC  
(B) 3A 125/250VAC

2.接触电阻 Contact Resistance:30mΩmax

3.绝缘电阻 Insulation Resistance:500VDC 100MΩmin

4.耐电压 Dielectric strength:1500VAC, 1Minute

5.环境温度 Ambient Temperature:-25°C ~ +80°C

6.电气寿命 Electrical Life:100,000 Cycles

	<p><b>MSW-11</b> ON-(ON) 5A 125/250VAC <b>MSW-11B</b> ON-(ON) 3A 125/250VAC SPDT 3P</p>	
	<p><b>MSW-12</b> ON-(ON) 5A 125/250VAC <b>MSW-12B</b> ON-(ON) 3A 125/250VAC SPDT 3P</p>	
	<p><b>MSW-13</b> ON-(ON) 5A 125/250VAC <b>MSW-13B</b> ON-(ON) 3A 125/250VAC SPDT 3P</p>	
	<p><b>MSW-14</b> ON-(ON) 5A 125/250VAC <b>MSW-14B</b> ON-(ON) 3A 125/250VAC SPDT 3P</p>	

MSW-2 Series 技术特性 Specification

1.规格 Rating:1A 125/250VAC

2.接触电阻 Contact Resistance:30mΩmax

3.绝缘电阻 Insulation Resistance:250VDC 100MΩmin

4.耐电压 Dielectric strength:1000VAC, 1Minute

5.环境温度 Ambient Temperature:-25°C ~ +65°C

6.电气寿命 Electrical Life:30,000 Cycles

	<p><b>MSW-21</b> 1A 125/250VAC SPDT 3P</p>	
	<p><b>MSW-22</b> 1A 125/250VAC SPDT 3P</p>	