



**PROGRAMMABLE DIGITAL ONE-CHANNEL TIMER  
TE 20**

3+2 standard+extended **5** YEAR TOTAL WARRANTY

The timer is manufactured under the CMOS technology with a quartz minicontroller which makes it reliable for operation. The timer is adjusted for DIN-rail mounting. It is possible to adjust forty-eight ON/OFF cycles. Each program setting is done through selection of the cycle start and end time with the push buttons. When a program is on, the time cycle is indicated as a dimmed out section on the dial. For example, if you start a 2-hour program the 2-hour portion between On and Off times on the dial becomes dark. The minimal interval for cycle programming is 15 minutes. The battery allows programme storing at lack of power supply.

Type	Packing/Box (pcs)	Catalogue number
TE 20	1 / 92	50100

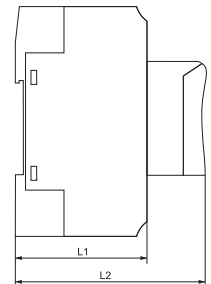
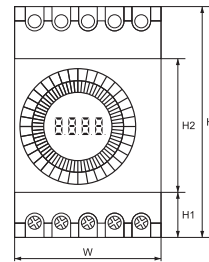


Dimensions (mm)

H	H1	H2	W	L1	L2
85	20	45	54.5	34	66

**TECHNICAL DATA:**

- Power supply voltage: 230V; 50Hz
- Time deviation: <2s (at 25°C)
- Battery for programme storing and operation: up to 150 hours
- Power consumption: <5VA
- Switched on indicator
- Electrical wear resistance: 105 cycles
- Mechanical wear resistance: 107 cycles
- Operating temperature: -10 ÷ +65°C
- Humidity: 35 – 85%RH
- Number of contacts: 1NO + 1NC
- Li-Ion battery: 150h
- Commutating capacity:
  - ▶ active load: up to 16A
- Weight: 120g



**MOUNTING:**

- DIN-rail

**PROGRAMMABLE DIGITAL ONE-CHANNEL TIMER  
TE 15A**

3+2 standard+extended **5** YEAR TOTAL WARRANTY



The timer is manufactured under the CMOS technology with a quartz minicontroller which makes it reliable for operation. The timer is adjusted for DIN-rail mounting. It can memorize up to eight ON/OFF programs (ON/OFF cycles). Each program setting is done through the push buttons. Programming starts with selection of the days of the week (you can choose among a whole week cycle, work days cycle, weekend cycle, or a specific day of the week); then the cycle start time and end time are set. If you have selected work days cycle, then the program will start and stop at the set times each work day of the week. This is one ON/OFF program. Where necessary, other programs can be memorized up to the limit of eight possible programs. If you continue setting new programs the first memorized program will be deleted. The minimal interval for cycle programming is 1 minute..

Type	Packing/Box (pcs)	Catalogue number
TE 15A	1 / 100	50036

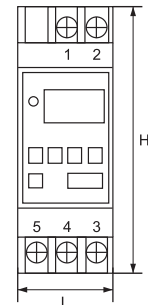
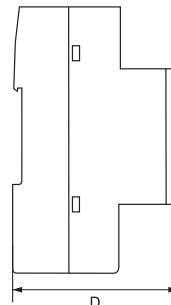


Dimensions (mm)

H	L	D
85	36	64

**TECHNICAL DATA:**

- Display: LCD
- Power supply voltage: 230V; 50Hz
- Operations: 8 switching ON/OFF
- Time deviation: <2s (at 25°C)
- Battery for programme storing: up to 15 days
- Power consumption: <5VA
- Switched on indicator
- Electrical wear resistance: 105 cycles
- Mechanical wear resistance: 107 cycles
- Operating temperature: -10°C ÷ +65°C
- Humidity: 35 – 85%RH
- Number of contacts: 1NO + 1NC
- Commutating capacity:
  - ▶ active load: up to 6A
  - ▶ inductive load: up to 2.5
- Weight: 120g



**MOUNTING:**

- DIN-rail