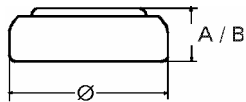


Data Sheet

Type Number 4075
Designation IEC SR 44
System Silver oxide / Zinc /
 KOH - Electrolyte



Nominal Voltage 1,55 V
Typical Capacity C 160 mAh
 Load 5,6 kOhm, at 20°C down to 1.0 V

Weight (approx.) 2,4 g
Volume 0,51 ccm
Coding..... Date of Manufacturing
 Month/Year

Temperature Ranges min max.
 Storage -10°C 65°C
 Discharge -10°C 65°C

Dimensions min max.
 Diameter (Ø) 11,25 11,6
 Height (A/B) 5,0 5,4

Segment Electronic

Main Applications Photo
 Electronic

Typical Capacities (at 20°C)

Discharge Type	Load	End Voltage:	1.0 V
Continuous	5600 Ω	Time:	630 h
24h/d,7d/w		Capacity [mAh]:	160
Current [μA]:	275	Energy [mWh]:	225