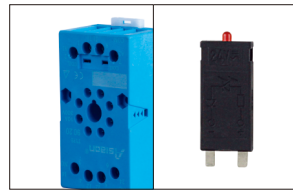




90.20



90.20

AMC



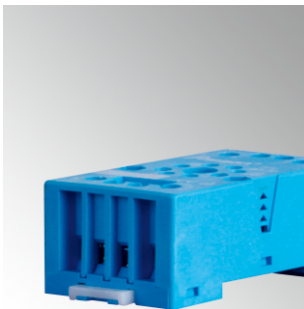
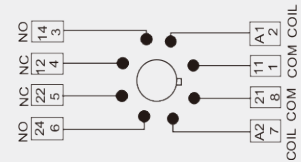
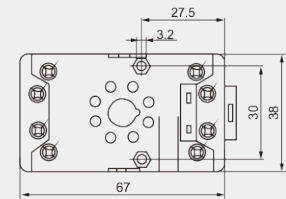
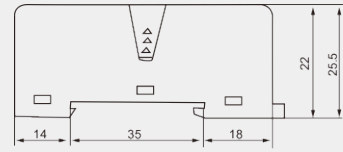
Specification

Rated load	Current / Voltage	A/VAC	10/300
Dielectric strength	Between coil and contact	V/S	2000
	Between contacts	V/S	2000
External connection wire	AWG/mm ²	20-14/0.5-2.5	
Screw torque	Nm	0.8	
Terminal protection degree		IP20	

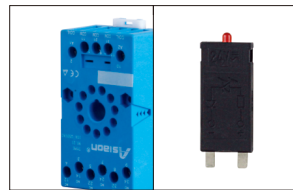
Matched relay

Socket	Relay model	Metal Clip	Module	DIN rail
90.20	MK2P MK2PK	K-53	AMC Series	
	JQX10-2Z			
	60.2 70.2 90.2			
	AS80.2			
	90.2			

Outline dimension, Wiring diagram

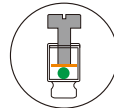


90.21



90.21

AMC



Specification

Rated load	Current / Voltage	A/VAC	10/300
Dielectric strength	Between coil and contact	V/S	2000
	Between contacts	V/S	2000
External connection wire	AWG/mm ²	20-14/0.5-2.5	
Screw torque	Nm	0.8	
Terminal protection degree		IP20	

Matched relay

Socket	Relay model	Metal Clip	Module	DIN rail
90.21	MK3P MK3PK	K-53	AMC Series	
	JQX10-3Z			
	60.3 70.3 90.3			
	AS80.3			
	90.2			

Outline dimension, Wiring diagram

