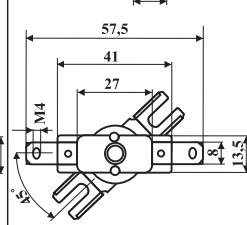
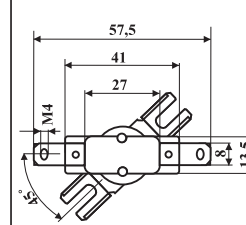
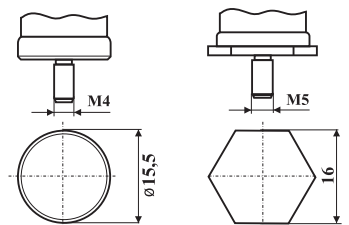


optionally



	AH03/3	AK33	AR03	AR33	AS03	AS33
1	SPST n.c.	DPST n.c.	SPST n.c.	SPST n.c.	SPST n.c.	SPST n.c.
2	250V; AC	250V; AC	250V; AC	250V; AC	250V; AC	max 400V; AC
3	13 A 2,5 A	16 A per each line 6,0 A per each line	16 A 6,0 A	16 A 6,0 A	25A/250 V	25A/250 V; 15A/400 V 16A/250 V; 10A/400 V
4	10 000 cycles	10 000 cycles	3 000 cycles	3 000 cycles	6 000 cycles	10 000 cycles
5	16 A / 2000 cycles	20 A / 200 cycles	20 A / 200 cycles	20 A / 200 cycles	40 A / 50 cycles	32 A / 200 cycles
6	65°C - 150°C	65°C - 150°C	50°C - 180°C	50°C - 180°C	60°C - 180°C	60°C - 180°C
7	±5K/±7,5K/±10K	±5K/±7,5K/±10K	±5K/±7,5K/±10K	±5K/±7,5K/±10K	±5K/±7,5K/±10K	±5K/±7,5K/±10K
8	30 ± 15 K	manual reset	30 ± 15 K	manual reset	30 ± 15 K	manual reset
9	0,5 ÷ 1 K / min	0,5 ÷ 1 K / min	0,5 ÷ 1 K / min	0,5 ÷ 1 K / min	0,5 ÷ 1 K / min	0,5 ÷ 1 K / min
10	2	2	2	2	2	2
11	max 230°C / 1 min	max 260°C / 1 min	max 260°C / 1 min	max 260°C / 1 min	max 260°C / 1 min	max 260°C / 1 min
12	IP 00	IP 00	IP 00	IP 00	IP 00	IP 00
13	250 V	250 V	250 V	250 V	250 V	250 V
14	incorporated; non-electronic	incorporated; non-electronic	incorporated; non-electronic	incorporated; non-electronic	incorporated; non-electronic	incorporated; non-electronic
15	-----	2 500 V; 50 Hz	2 500 V; 50 Hz*	2 500 V; 50 Hz*	2 500 V; 50 Hz*	3750 V; 50 Hz*
16	max ≤ 40 mΩ	max ≤ 40 mΩ	max ≤ 20 mΩ	max ≤ 20 mΩ	max ≤ 20 mΩ	max ≤ 20 mΩ
17			VDE	VDE	UL	

*from cup to the terminal