

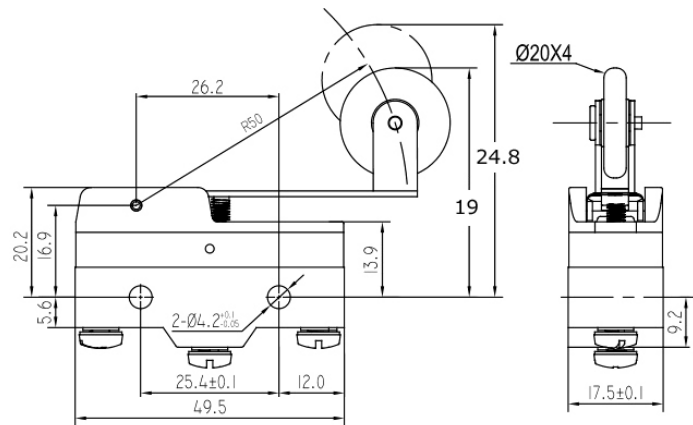
# LZ15-GW25-B

## Features

- 1.Rating: 15A 125/250VAC
- 2.Various actuator are available
- 3.High precision, fast action
- 4.High mechanical strength
- 5.Long life, stable and reliable
- 6.CCC,CE,UL approvals

## Application Area

Widely applied in machinery,productione line,elevator equipment etc.



Rating		15A 125/250VAC
Initial contact resistance		25mΩ max.
Initial insulation resistance		100MΩ min. (at 500VDC)
Dielectric strength	Bestween non-consecutive terminals	1000Vrms, 50/60Hz for 1 min
	Between non-current carrying metal parts and each terminal	2000Vrms, 50/60Hz for 1 min
	Between ground and each terminal	2000Vrms, 50/60Hz for 1 min
Max.shock resistance	Destruction	1000m/s <sup>2</sup> max.
	Malfunction	300m/s <sup>2</sup> max.
Vibration resistance		10-55Hz, 1.5mm double amplitude
Operating life	Mechanical life	1,000,000 operations min.
	Electrical life	100,000 operations min.
Ambient temperature		-25°C to +85°C
Ambient humidity		85% RH max.
Operating frequency	Mechanical	240 operation/min
	Electrical	20 operation/min
Operating speed		0.01mm-1m/s
Protection degree		IP40