

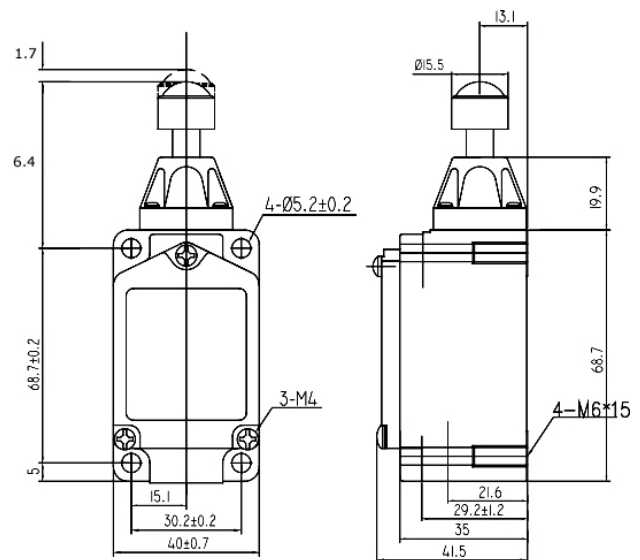
# WL-D12

## Features

- 1.Rating : 10A,125/250VAC
- 2.Double circuit switch, widely used
- 3.Aluminate alloy case , high mechanical strength
- 4.Dust、water and oil proof structure design
- 5.Various actuators for different environment use

## Application Area

Widely applied in machinery,productione line,elevator equipment etc.



Rating		10A 125/250VAC
Initial contact resistance		25mΩ max.
Initial insulation resistance		100MΩ min. (at 500VDC)
Dielectric strength	Bestween non-consecutive terminals	1000Vrms, 50/60Hz for 1 min
	Between non-current carrying metal parts and each terminal	2200Vrms, 50/60Hz for 1 min
	Between ground and each terminal	2200Vrms, 50/60Hz for 1 min
Max.shock resistance	Destruction	1000m/s <sup>2</sup> max.
	Malfunction	300m/s <sup>2</sup> max.
Vibration resistance		10-55Hz,1.5mm double amplitude
Operating life	Mechanical life	1,000,000 operations min.
	Electrical life	100,000 operations min.
Ambient temperature		-10℃ to +80℃
Ambient humidity		35% to 95% RH
Operating frequency	Mechanical	120 operation/min
	Electrical	30 operation/min
Operating speed		1mm-1m/s
Protection degree		IP65